

ICE STATION ZEBRA

Wiley Saunders

Ada Slaight Gallery

April 1st-6th, 2026

Howard Hughes, the millionaire aviator lived for four years at the Desert Inn in Las Vegas, Nevada. Hughes suffered from obsessive compulsive disorder resulting in extreme germaphobia. He was living as a recluse who was only seen by his bodyguards.

Hughes would call into the only local channel airing overnight at the time and request his favourite film - *Ice Station Zebra*. When the channel would no longer comply with his requests Hughes simply purchased the television station and ordered them to air the film on repeat every night. By creating this media loop, Hughes had perfected his own feedback system to help manage his condition: keeping himself in a suspended state of hyperreality.

Through a cumulative studio practice of building boxes I am creating these same conditions of hyperreality to better understand the metaphysical experiences of epilepsy.

IMAGE LIST:

	<p>Wiley Saunders, <i>Big Cow/Pivot Irrigation</i>, 2025, Fir, Plywood, Pine, Turf, Woodblock Toy, Oil on Canvas, 12x7x5".</p>
	<p>Wiley Saunders, <i>Black Book</i>, 2025, Concrete, Spray paint, 10 1/2 x 6".</p>
	<p>Wiley Saunders, <i>Blue Book</i>, 2026, Concrete, Spray paint, 10 1/2 x 6".</p>
	<p>Wiley Saunders, <i>Cantilever House</i>, 2025, White Oak, Walnut, Fir, Model Tree, Model Car, 3x4"</p>



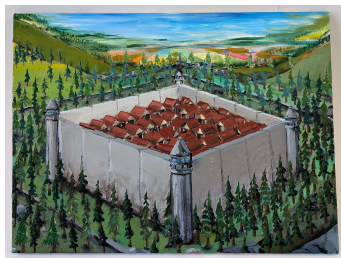
Wiley Saunders, *Cigar Box 2 (The Meeting)*, 2026, Cigar Box, Cork, Model Trees, Model Figures, Leslie Spit Sand, 8x4"



Wiley Saunders, *City Plane*, 2025, Acrylic on Canvas, 40x40".



Wiley Saunders, *City Stake*, 2025, Pine, 10x2".



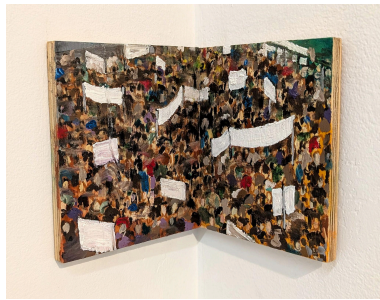
Wiley Saunders, *Compound*, 2025-26, Oil on Canvas, 24x18".



Wiley Saunders, *Compound*, 2026, Plywood, Pine, MDF, Spray paint, White Oak, Roasted Oak, Model Trees, 12 ¾ x 11 ½".



Wiley Saunders, *Cored Concrete*, 2023, Concrete, 3x12"



Wiley Saunders, *Corner (Protest)*, 2025, Oil on Plywood, 8x5".



Wiley Saunders, *Corner Piece*, 2023, Oil on Muslin over Panel, 13x5".



Wiley Saunders, *Cul-de-sac*, 2025, Plywood, MDF, White Oak, Roasted Oak, Walnut, Pine, Fir, Spray paint, 22" diameter.



Wiley Saunders, *Dave Saunders Walnut Dugout*, 2026, Walnut, Plexiglass, 6x19".



Wiley Saunders, Dave Saunders, *Cigar Box 1 (Arrival)*, 2026, Cigar Box, Cork, Model Grass, Leslie Spit Sand, Steel, 8x5 1/2".



Wiley Saunders, Dave Saunders, *Dad House*, 2006-26, Fir, Zip Systems Sheathing, Plexiglass, Plywood, Model Trees, Model Cars, 4 1/2 x 4 x 3 1/2".



Wiley Saunders, Dave Saunders, *Town*, 2026, Assorted Hardwood, Paints and Toys, 47x40".



Wiley Saunders, *Dugout Box*, 2026, White Oak, 7x5x2".



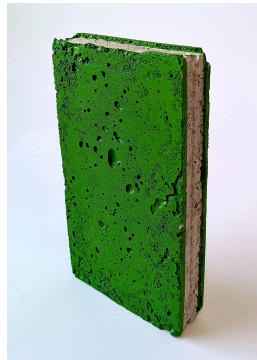
Wiley Saunders, *Flaming City Mallet*, 2023-24, White Oak, Hockey Tape, Fire, 2 ½ x 2 ½ x 16”.



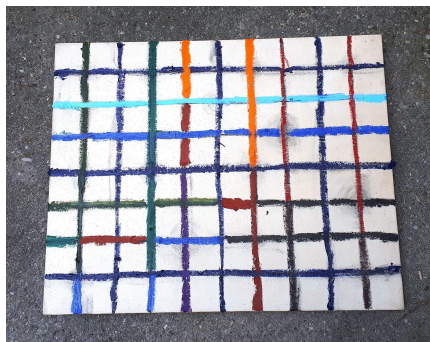
Wiley Saunders, *Football Game Hypnosis*, 2025, Oil on Muslin over Plywood, Wormy Maple, 19 ½ x 8”.



Wiley Saunders, *Forest Fire*, 2023-26, Acrylic on Canvas over Plywood, Walnut, 15x12”.



Wiley Saunders, *Green Book*, 2026, Concrete, Spray paint, 10 ½ x 6”.



Wiley Saunders, *Grid Landscape*, 2024, Oil bar on Canvas, 30x24”.



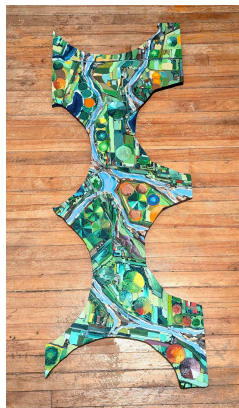
Wiley Saunders, *Ice Merchant*, 2026,
Toy Penguin, Tile, Stone, Concrete
from Leslie Spit, 4x5”



Wiley Saunders, *Ice Station Zebra*,
2024, Acrylic on Canvas, 11x14”



Wiley Saunders, *King Kong*, 2025,
MDF, Walnut, Toy, 44x2x2” .



Wiley Saunders, *Knife*, 2025, Oil and
Acrylic on Muslin over Plywood,
17x46”.



Wiley Saunders, *Lil Fence*, 2024,
Poplar and Metal grate, 6x25”.



Wiley Saunders, Matt Saunders,
Malibu, 2025, Oil on Panel, Plywood,
Wax, Model Figurine, 21 ½ x 5 x 3”.



Wiley Saunders, *Night Drive
Tobermory*, 2025, Oil on Canvas,
18x24”.



Wiley Saunders, *Painted Gouge 1*,
2023, Carved MDF, Spray paint, 9x8”.



Wiley Saunders, *Ponyo*, 2025, Acrylic on OSB, Fir with Wax and wood figures, 11x10 1/4".



Wiley Saunders, *Porthole*, 2025, Oil on Panel with Metal Frame, 7 1/2 x 9".



Wiley Saunders, *Red Book*, 2026, Concrete, Spray paint, 10 1/2 x 6".



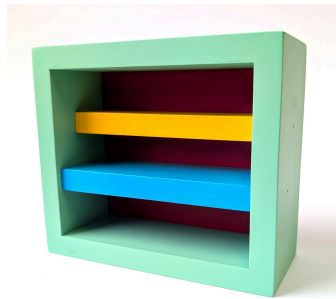
Wiley Saunders, *Red Panels*, 2026, Oil and Paint marker on Canvas over Plywood, White Oak, 16x16"



Wiley Saunders, *Screens 2*, 2026, Oil on Canvas, 24x18".



Wiley Saunders, *Screens*, 2024-26, Oil on Canvas, 30x24".



Wiley Saunders, *Shelves*, 2026, Spray paint, MDF, 8 x 3 1/2 x 7".



Wiley Saunders, *Stuffed Box*, 2026, White Oak, Concrete, 6x7 1/2".



Wiley Saunders, *Sunset Shelf*, MDF and Spray paint, 10 ½ x 15 ½”.



Wiley Saunders, *The Science Centre*, 2023, Oil on Canvas over Plywood, 23x7 ½”.



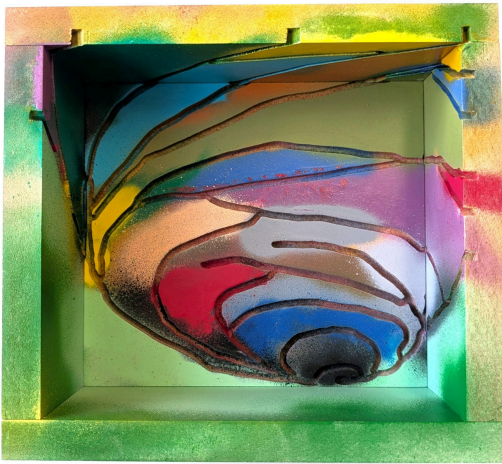
Wiley Saunders, *Tile Edge Cleaver*, 2026, Metal, Hockey tape, Walnut, 4x11”.



Wiley Saunders, *Vortex (Clear Skies)*, 2026, Carved MDF and Spray paint, 12 ½ x 10 ¾”.



Wiley Saunders, *Vortex (Dry)*, 2023-6, Carved MDF and Spray Paint, 13 ½ x 12 ½”.



Wiley Saunders, *Vortex (Grassy)*, 2026, MDF, Spray paint, 9 ½ x 8 ½”.



Wiley Saunders, *White Oak Vortex*, 2024, White Oak, 6” diameter.



Wiley Saunders, *Yellow Book*, 2026,
Concrete, Spray paint, 10 1/2 x 6".