

Faculty of Design

2021

## Designing for Ambivalence: Co-creating a resilient floating neighbourhood in rural Philippines

Jurado, Alazne Echaniz and Celika, Sine

---

### Suggested citation:

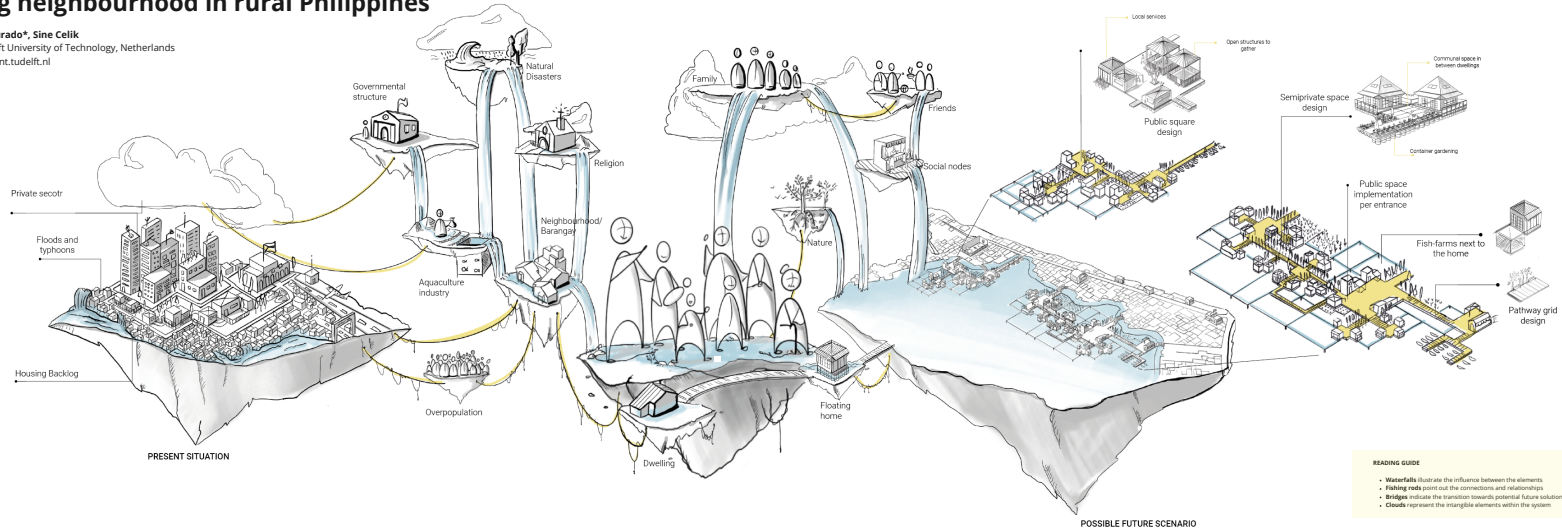
Jurado, Alazne Echaniz and Celika, Sine (2021) Designing for Ambivalence: Co-creating a resilient floating neighbourhood in rural Philippines. In: Proceedings of Relating Systems Thinking and Design (RSD10) 2021 Symposium, 2-6 Nov 2021, Delft, The Netherlands. Available at <http://openresearch.ocadu.ca/id/eprint/3895/>

*Open Research is a publicly accessible, curated repository for the preservation and dissemination of scholarly and creative output of the OCAD University community. Material in Open Research is open access and made available via the consent of the author and/or rights holder on a non-exclusive basis.*

*The OCAD University Library is committed to accessibility as outlined in the [Ontario Human Rights Code](#) and the [Accessibility for Ontarians with Disabilities Act \(AODA\)](#) and is working to improve accessibility of the Open Research Repository collection. If you require an accessible version of a repository item contact us at [repository@ocadu.ca](mailto:repository@ocadu.ca).*

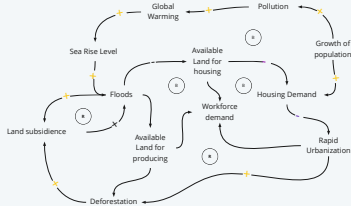
# Designing for ambivalence: Co-creating a resilient floating neighbourhood in rural Philippines

Alazne Echaniz Jurado\*, Sine Celik  
 Faculty of IDE, Delft University of Technology, Netherlands  
 \*a.echaniz@student.tudelft.nl



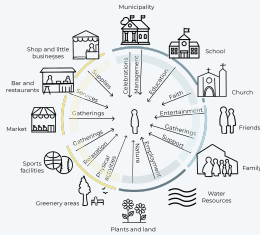
## EMBRACING TENSIONS

Philippines' relationship to water is a multidimensional one. Firstly, the country is economically dependant on water. Filipinos live in close proximity to water as a source of income, as well as a source of food. At the same time, the abundance of water causes the locals in coastal areas to suffer from rising sea levels. The problems occurring from this ambivalent relationship affects the daily life in the area and housing conditions. The current situation is analysed through a causal loop diagram, where 'B' stands for balancing and 'R' for reinforcing. The diagram identifies points of tension in the current system in relation to the floods and the housing demand from a systemic perspective that considers the societal shifts and environmental pressures as a whole.



## CO-EXPLORING SOCIAL LIFE

Filipino community is a close-knit one, where many social activities and gatherings are a part of daily life. Before co-creating a future scenario, an interactive game called 'make your dream neighbourhood' was played with the locals that aims to co-explore their daily needs and expectation from the future. While identifying the existing dynamics of daily life in the city of Hagonoy, the game also aims to understand the balance of public-private spaces that complement the daily activities and social gatherings that are to be taken into account when ideating for solutions that correspond to the values of the community. The outcome of the game is an egocentric map of people, social groups, spaces, activities and their influence on daily routines.



## THE FLOATING NEIGHBOURHOOD

Based on the insights gathered through the co-exploration game, a concept proposal for a hybrid neighbourhood has been developed, where the floating community is integrated into the existing urban structure. The desires expressed by the end-users and the tension points are translated into architectural elements and spaces of social interaction and activities to ensure societal acceptance of the proposed solution. The new floating expansion for the city of Hagonoy puts the needs of the local community in the centre, while embracing their fragile relationship with water. The floating neighbourhood operates and expands in a non-invasive way with inviting touch points to ease the integration of the old and new.

