

## Topiary Books

Aisha Ali, and Andalah Ali

Bookworks, 111 pages (10 books, 10 pages each; one book, 11 pages), 4 x 6 inches.

111 photographs of topiaries; accompany titles as cover pages.



PREMIUM (?)

BASKETRY, CANDLES, REFLECTION  
RAIN, PUDDLES, DEBRIS

PALE BETWEEN DARK RECTANGLES  
COMPOSED WINDOW DISPLAY

CHILD, CHUCKS, ICE CREAM

ENGEL & VÖLKERS

A PREPONDERANCE OF MATERIAL,  
ARRANGED

MG.K

GREENHOUSE (NOT ALLOWED)













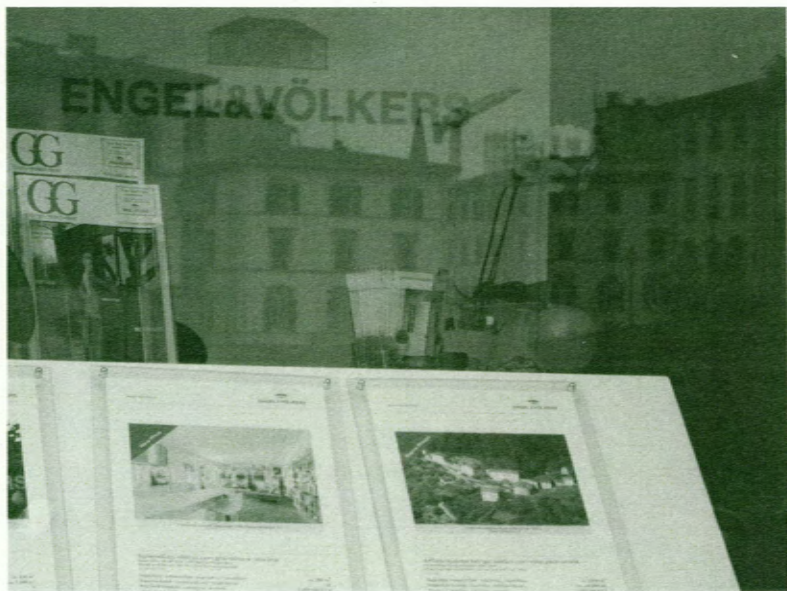














THREE BARS, OFF-CENTRE

(UPON RETURN)

CUSHIONS AND STOOL

IDENTIFIED GATHERING PLACE

PROTECTIVE BAG ON BIKE  
SEAT

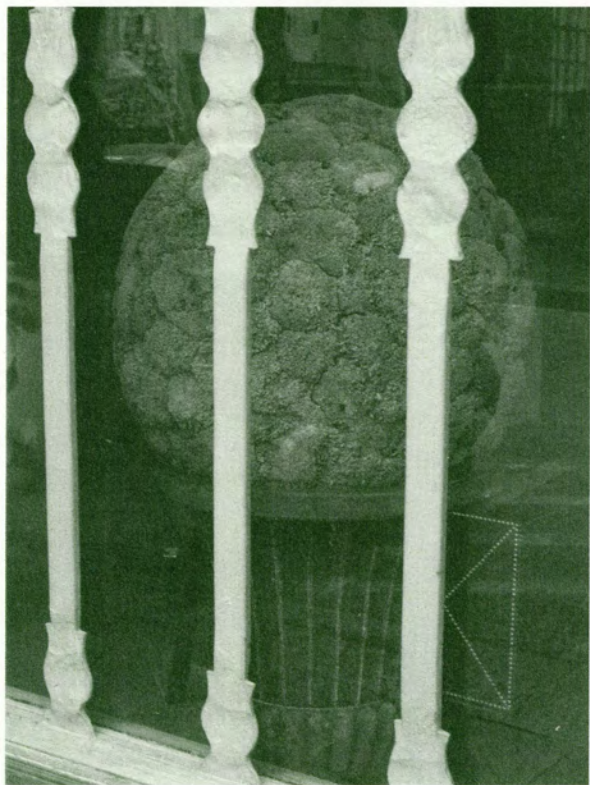
CORNER VEGAN; SEATING  
CUBE

GENEROUS AMOUNTS OF  
BARBED WIRE

MANY WINDOWS, VARIOUS SIZES

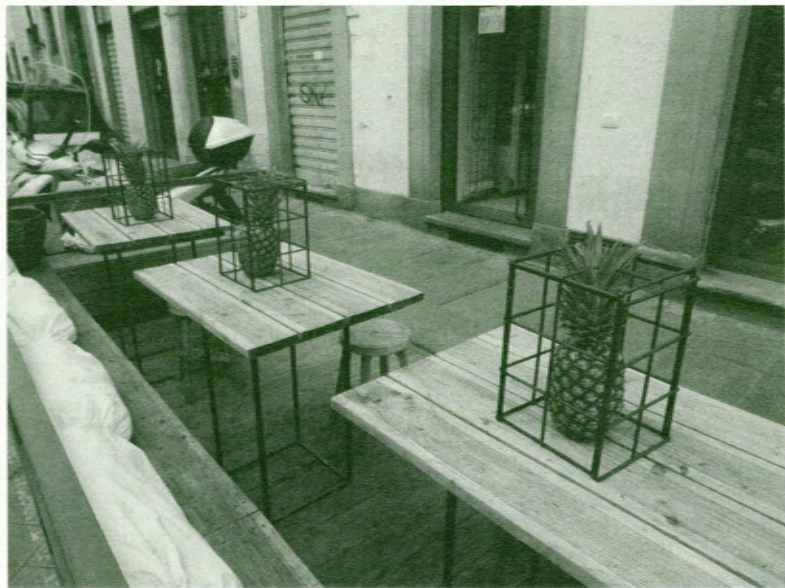
DOWNSPOUT, BALCONY, CLOSED  
SHUTTERS

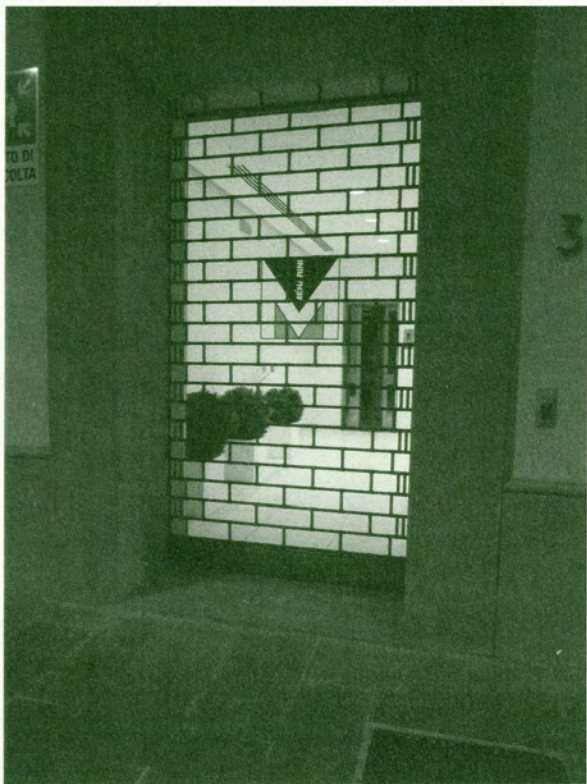






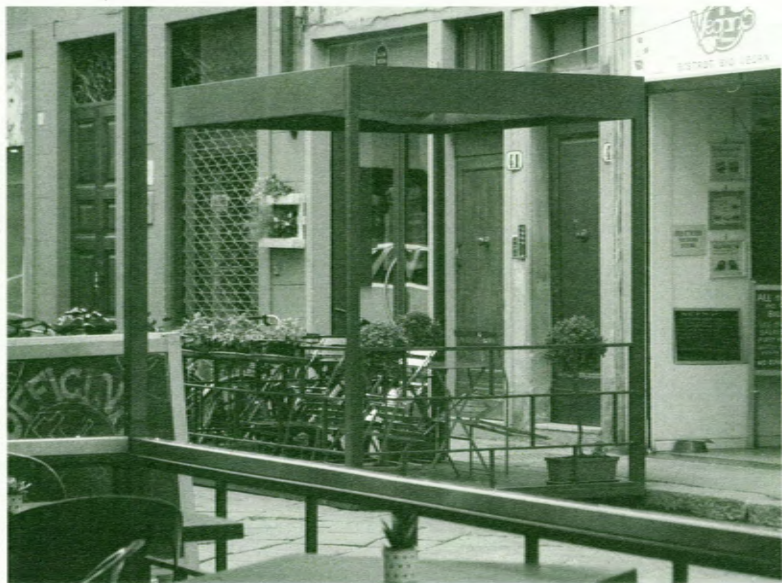






















CONFRONTATION

EXPOSED MASONRY, WET SPOT

PAPER ENCLOSED, GLASS CASE

DEEP SHADOWS

SMALL STEP

LANDMARKS DISPLAYED

TABLES AND SEATS

GRASS

PAPER CRACKS (REPEATED  
PATTERN)

PAPER CRACKS, WELCOME  
MAT, PURSES

BIKE PARKING, STORM DRAIN  
ON RAINY NIGHT



























STALWART TURNSTILES

LION-FACED DOOR

COLUMNS, ROUND AND SQUARE

TRAPEZOIDAL LIGHT FROM  
SKY

... DI MANDATA ... AUTOPOMPA

NOTHING

DOWNSPOUT

TALLER TOWARDS THE LEFT,  
TWO WHITE AWNINGS

BAR GELATERIA

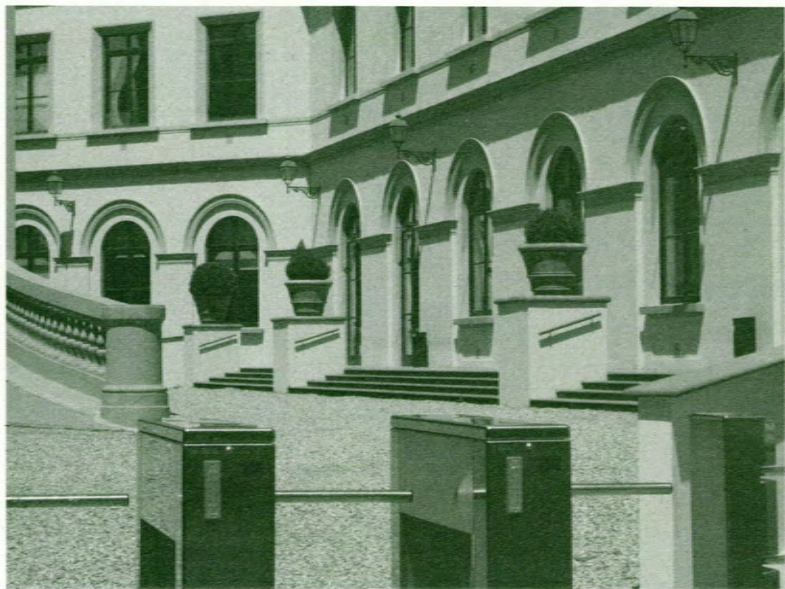
TWO CHAIRS, SIX WINDOWS



















CCO DI MANDATA  
R. AUTO POMPA  
ne massima 1,2 MPa  
RANTI ANTINCENDIO

















ASYMMETRICAL DISTRIBUTION  
OF BLACK AND WHITE

TICKET, STOOL, STOOL

STRIKINGLY BLUE WALL

TRASH, TWO WAYS.

WHITE MARBLE W/ VEINS  
VERTICAL AND HORIZONTAL;  
UNCLAIMED NECK

SPOTLIGHT AND REFLECTION

ENGEL & VÖLKERS - COPIED  
WORLD MAP

FAMOUS ENTRANCEWAYS

I WISH IT WAS A DOWNSPOUT

BARRED WINDOW, WHITE  
GRATE













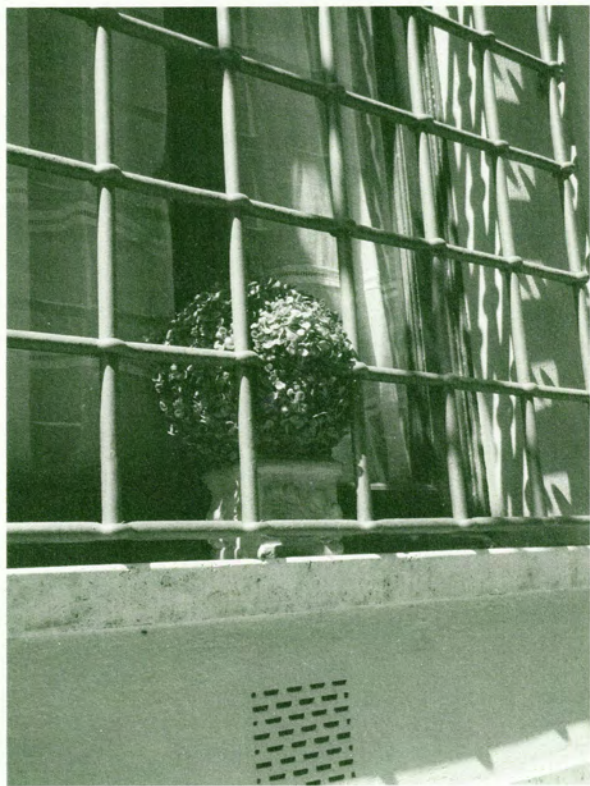
















ASYMMETRICAL DISTRIBUTION  
OF BLACK AND WHITE

TICKET, STOOL, STOOL

STRIKINGLY BLUE WALL

TRASH, TWO WAYS

WHITE MARBLE W/ VEINS  
VERTICAL AND HORIZONTAL;  
UNCLAIMED NECK

SPOTLIGHT AND REFLECTION

ENGEL & VÖLKERS - COPIED  
WORLD MAP

FAMOUS ENTRANCEWAYS

I WISH IT WAS A DOWNSPOUT

BARRED WINDOW, WHITE  
GRATE













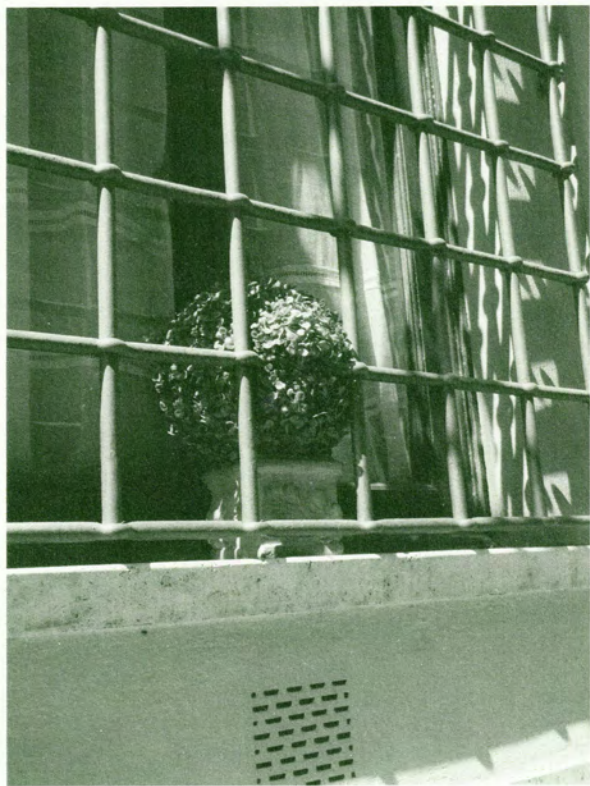














DEJECTED

SHADOWY ENTRANCEWAY

MASONRY THREE WAYS

0-24:100

GARLAND OF PLENTY

ATTAKCO DI MANDATA PER  
AUTOPOMPA

VENDESIX2; AFFITTASIX6,  
U.R.I.I.

TWO CHAIRS, EIGHT WINDOWS

A FRIDGE IN A STORE

WALL IN NEED OF RE-PAINTING

BIG MESS O' ROCK



























FROM ABOVE

METAL EDGE

REFLECTION OF CITY

WET STAINS

HERRINGBONE WITH DIS-  
COLOURATION

TIMEPIECES

CHIEVO VERONA / H: 21,00

FOUR SECTIONS: PIN STRIPES

WHITE WALL

ARROWS OF HERRINGBONE

SLANT AND MASONRY





























WET SPOT, SNEAKERS IN  
MOTION

GUM SMEAR (?)

DINING TIME

SOAKED AND STAINED

SNEAKERS IN MOTION

WRINKLED CURTAIN; SUBTLE  
REFLECTIONS

SCARF, BAGS, ETC

MESH BEHIND BARS (STUDY  
IN TEXTURE)

MULTIDIRECTIONAL SPOONS ON  
DISPLAY

THERMOMETER IN HOUSE  
WITH BOOTS, THREE  
FLOURISHES





























CANVAS BAG, LEG TRUNCATED

WHITE VAN

PUCCI AND PAVEMENT

SLANT AND MASONRY

DOOR, BOX, DOOR, CURB

HERRINGBONE; NO DIS-  
COLOURATION

EYES AND FINGERS

EXPOSED MASONRY IN WHITE  
WALL

GRASS

HOOKS





























ASSIGNED PARKING

WINDOWS IN WHITE WALL;  
HERRINGBONE

WINDOWS IN WHITE WALL;  
HERRINGBONE

GATE AND WINDING ROAD

ONE-POINT PERSPECTIVE  
(BRUNELLESCHI!)

SLATS ON CHAIR AND GROUND;  
CORNER TABLE

WHITE SHOES

FOUR WINDOWS

UMBRELLA IN SECTION

TEMPORARY DIVISION







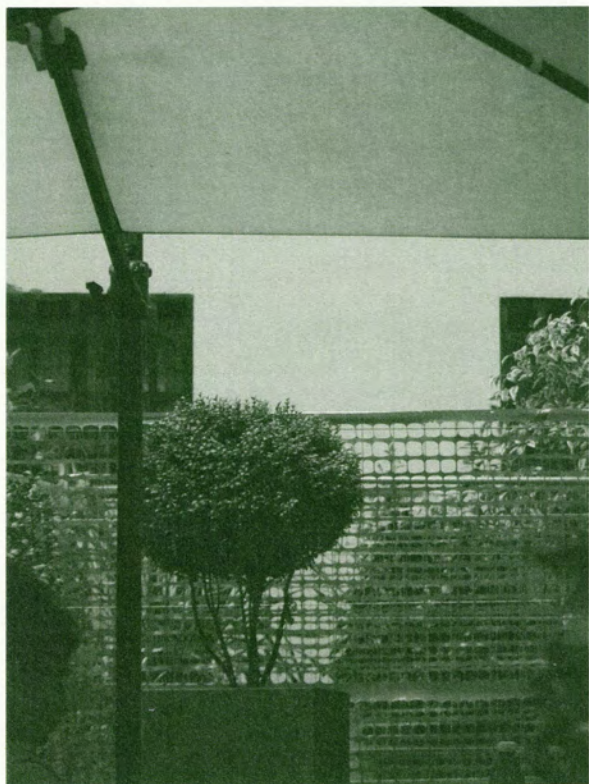




















UNUSUALLY ROUND

LARGE BOTTLES (PHOTOGRAPHED)  
SMALL BOTTLES

SOUTHWEST HERRINGBONE

CRATE WRAPPED IN PLASTIC,  
CROSSED W/ TAPE, READY  
FOR SHIPPING

MEAT COLUMN

PIGEON IN MOTION

CIRCLE + STRIKETHROUGH X 2

DAPER, CRACKS, WELCOME  
MAT

CAKE DISPLAY-CASE,  
CANDY-STRIPED WALLS

DOTS, STRIPES AND HATCHING

SMALL SHELTER, LARGE  
SHELTER

STAIRCASE, STAIRCASE  
CONTINUED











